

# System WUN-026S



*ground mounfed, double support*

**material:** Structural steel with increased durability, hot dip galvanized steel

Anti-corrosion coating:

**Magnelis®**

**kąt:**  
angle

25° - 30°

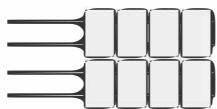


options:

inverter mounting set

Suitable for glass-glass modules

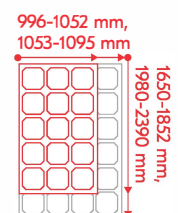
Additional cross-bracings



**Modules layout:**

portrait, 2 rows

Universal system suitable for modules 996-1142 mm wide and 1650-2390 mm long



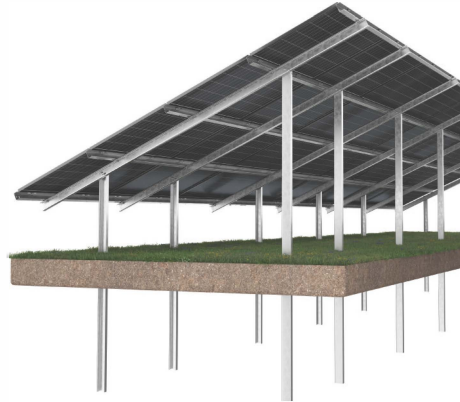
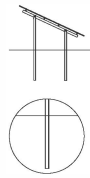
# System **WUN-026**

index:

**WUN026**

installation:

rammed into  
the ground

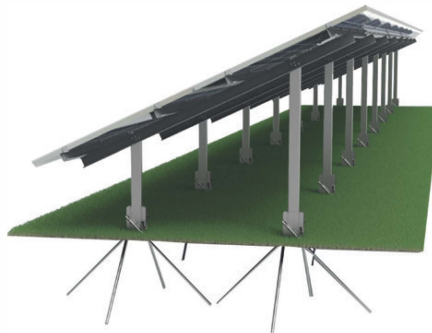
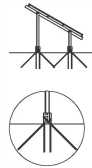


index:

**WUN026ST**

installation:

pressed into  
the ground



index:

**WUN026S**

installation:

screwed into  
the ground

